

Precision Test Probe

Part No.: WLP-1231B

6GHz Flange Test Probe for IPEX MHF1/U.FL



Features

- High Durability
- Low Return Loss

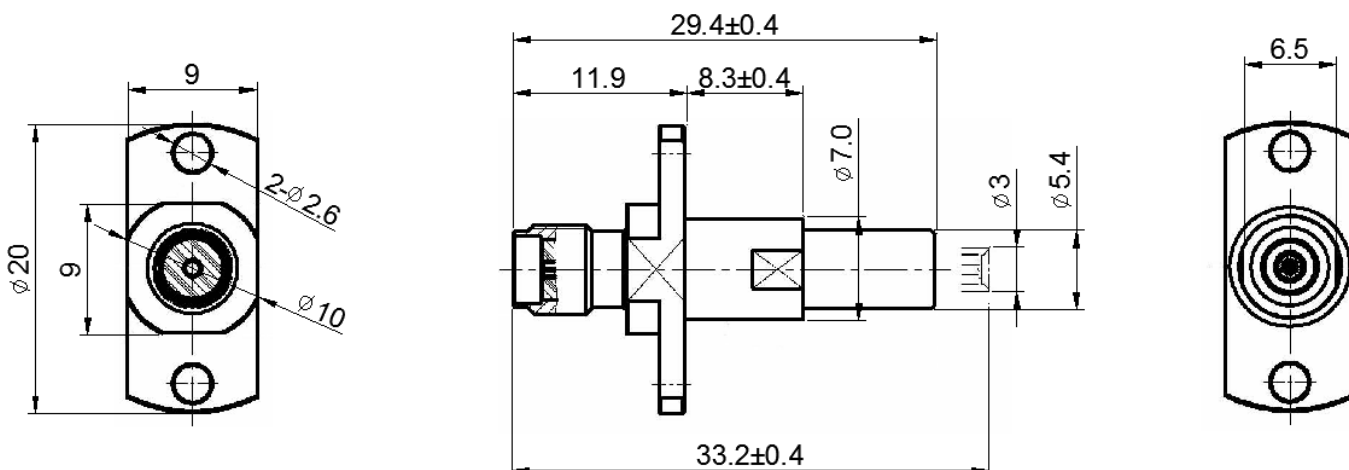


Specification	
Frequency :	6GHz
VSWR :	1.5: 1 (MAX.)
Impedance :	50Ω
Connector Type :	SMA Female to IPEX MHF1/U.FL

No	Description	Material	Q'ty	Finish
01	Body	Stainless	1	
02	Center Pin	Phosphor Bronze	1	Gold
03	Insulator	Teflon	3	
04	Spring	SWP	1	
05	Body	Brass	2	Gold
06	Press Body	Brass	1	Gold
07	Spring	SWP	1	
08	Center Pin	Brass	1	Gold

Outline Drawing

Units: mm



Dimension Tolerance: ±0.5 mm